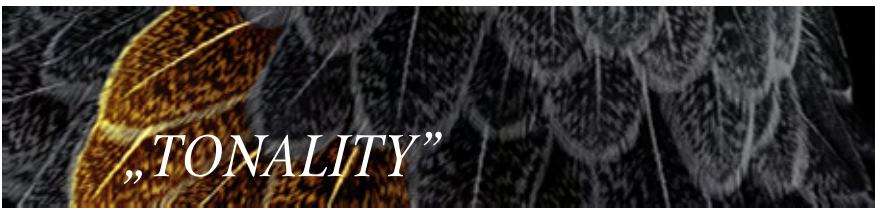




PRODUCT INFORMATION

Contents

- 1 Material composition
- 2 Manufacturing procedure
- 3 Measurements and tolerances
- 4 Weight
- 5 Colors and surfaces
- 6 Technical characteristics
- 7 Advantages
- 8 Application
- 9 Working
- 10 Graffiti protection
- 11 Care and cleaning
- 12 Handling
- 13 Additional information



1 Material composition

„TONALITY” cladding tiles are square tiles showing a profile on the reverse and consisting of burnt clay. They are fastened by means of positive locking onto vertical support frames (subconstruction) made of aluminum. The façade systems are described as „Classic system (CLS)”, „Adaptive system (ADS)” or „Basic clinch rail system (BAS)” depending on the kind of support frames that have been used.

The vertical joints between the cladding tiles are backed with joint profiles made of aluminum or neoprene.

In mounted condition, the CREATON façade „TONALITY” meets the requirement to non-inflammability (Building material classification DIN 4102-A according to DIN 4102-1).

2 Manufacturing procedure

„TONALITY” cladding tiles are vacuum-extruded, dried and burnt in ultra-modern manufacturing plants.

The excellence of the „KERALIS” raw materials and the „HIGH BAKING FACTOR” constitute the preconditions for the fascinating coloring and structure of our cladding tiles.

Double-dried clay is processed to finest powdered clay, dye-penetrated in finely graduated ratios of color mixtures and subsequently burnt at temperatures exceeding 1200°C.

„TONALITY”

3 Measurements and tolerances

Technical data of „TONALITY”-„CLASSIC”, „TONALITY”-„PLUS”						
Module size	Tile height	Tolerance	Tile width	Tolerance	Tile thickness „CLASSIC”/„PLUS”	Tolerance
(mm)	(mm)	(mm)	(mm)	(mm)	(mm)	(mm)
150 x 1,200	158	+/- 2.0	1,192	+/- 1.0	22 / 34	+/- 1,5
175 x 1,200	183	+/- 2.0	1,192	+/- 1.0	22 / 34	+/- 1,5
200 x 1,200	208	+/- 2.0	1,192	+/- 1.0	22 / 34	+/- 1,5
225 x 1,200	233	+/- 2.0	1,192	+/- 1.0	22 / 34	+/- 1,5
250 x 1,200	258	+/- 2.0	1,192	+/- 1.0	22 / 34	+/- 1,5
300 x 1,200	308	+/- 2.0	1,192	+/- 1.0	22 / 34	+/- 1,5
Longitudinal arch		max. 2.0 mm		Top edge arch		max. 2.0 mm
Lateral arch		max. 2.0 mm		Butt edge arch		max. 2.0 mm
Arch for both dimensions		max. 2.0 mm		Deviation from perpendicular		max. 2 mm on 200mm
Resistance to pressure		according to DIN EN 1304 for highest minimum load				
Module size	Weight „CLASSIC”/„PLUS”	Tolerance	Module size	Weight	Tolerance	
(mm)	(kg)	(kg)	(mm)	(kg)	(kg)	
150 x 1,200	5.5	+ 0.2/- 0.5	225 x 1,200	8.3	+ 0.2/- 0.5	
175 x 1,200	6.4	+ 0.2/- 0.5	250 x 1,200	9.2	+ 0.2/- 0.5	
200 x 1,200	7.4	+ 0.2/- 0.5	300 x 1,200	11.0	+ 0.2/- 0.5	
Water absorption < 6% weight						

* special dimension on demand - all lengths are produced subject-related.

4 Weight

„TONALITY”-„CLASSIC”: approx. 35 kg / m² incl. system subconstruction
 „TONALITY”-„PLUS”: approx. 50 kg / m² incl. system subconstruction

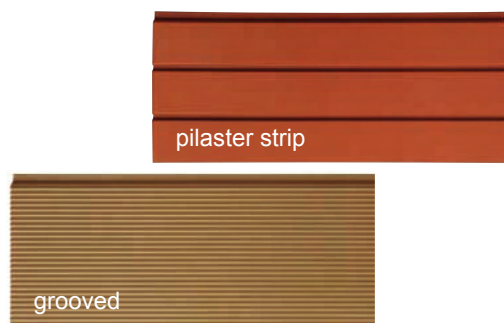


5 Colors and surfaces

Natural surfaces:



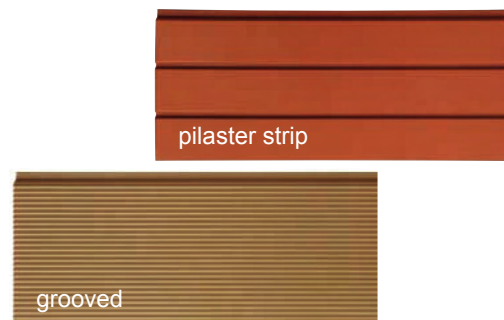
Surface structures:



Finished surfaces with permanent graffiti protection:



Surface structures:





6 Technical characteristics

„TONALITY” cladding tiles demonstrate the following technical characteristics:

- Basis weight (mean value): $30 \pm 2 \text{ kg/m}_2$
- The cladding tiles are frost-resistant in accordance with the testing requirements of DIN EN 539-2.

Materials of the support frames:

- CLS consists of the aluminum alloy EN AW 6060 according to DIN EN 755-2, material condition T66.
- ADS consists of the aluminum alloy EN AW 5754 according to DIN EN 755-2.
- BAS is a composite profile and consists of a basic profile and a joint profile of the aluminum alloy EN AW 5754 according to DIN EN 755-2.

„TONALITY” cladding tiles $\geq 250 \text{ mm}$ height must be fastened onto façades only by means of Adaptive profiles (ADS) or Basic clinch rail profiles (BAS).

7 Advantages

The „TONALITY” creative advantage:

Color, surface and installation advantage

The „TONALITY” technology advantage:

Total system advantage	maintenance-free, resistant to environmental conditions
Architectural advantage	appealing design possibilities, various choices of colors and formats, open / closed design of joints
Application advantage	minimal wall fastening from 30 mm, unrestricted ventilation, durable joint materials
Economical advantage	system weight of less than 38 kg/m_2 , minimal installation periods
Construction advantage	different sub-constructions to meet variable requirements
Functional advantage	optimal heat insulation and water vapor diffusion, reduction of thermal bridges, reduced energy consumption of buildings



8 Application

The „TONALITY” facade systems of CREATON offer many various possibilities of application:

- External walls of new buildings and renovations in domestic and industrial construction
- Interior walls in domestic and industrial construction
- Sun and sight protection with „TONALITY” Baguette or „TONALITY” lamella tiles

9 Working

Cutting and drilling

For the cutting and fitting of the cladding tiles, we recommend but wet cutters.

The cutters below have produced good cutting results:

Ceramics and stone cutting-off machine D2

made by Dahm

Art.-No. 30025

Diamond cutting-off wheel DN 1

made by Dahm

Art.-NO. 50152

For drilling purposes, we recommend the use of carbide or diamond charged twist drills.

Repair work

In the event of possible later repairs or corrections, we recommend the use of our CREATON cold engobe in the respective façade colors. This cold engobe is applied onto the dry cladding tile, which must be free of dust and grease, by means of a conventional painting brush.



„TONALITY”

CREATON [®]
NATURAL CLAY SETS THE TONE

10 Graffiti protection

Graffiti protection the way it is supposed to be: Efficient, lasting and immediately effective, as it is already included in the CREATON „KERALIS” baking procedure.

The graffiti protection will last the entire serviceable life. The brightening up or renewal of the protection is not required.

CREATON will provide you with a solvent-free cleaning agent not harmful to the environment for the removing of graffiti coats.

11 Care and cleaning

In the event of slight soiling, CREATON „TONALITY” façades are washed with a household cleaner or a mild soap solution and subsequently rinsed with clear water.

12 Handling

The cladding tiles and the subconstruction are packed onto pallets and protected against damage or soiling by means of shrink film and edge protectors.

CREATON cladding tiles can be stored outdoors without taking additional measures.

13 Additional Information

For additional information on CREATON „TONALITY” façade systems, please refer to the „TONALITY” Architects’ planning information, the „TONALITY” Installation guide, the „TONALITY” Compact brochure, the data sheets on „TONALITY” „CLASSIC” and „TONALITY” „PLUS”, the CREATON „TONALITY” price list, as well as to our website www.creaton.de.