

EXTERIOR PANELS

Think Trespa

Trespa International B.V.
Trespa International B.V. specialises in high quality panel material for façade cladding and interior use. Trespa has both the expertise and the means to develop products for specific segments of the market. Trespa is continually looking for ways to protect the environment even more effectively.

Trespa guarantees quality of both products and services. We offer our customers optimal technical support as well as straightforward documentation. Proof of this approach is the award of the ISO 9001 and ISO 14001 certificates.



Whatever your requirements, Trespa offers a full support service. Please contact us for further information.

Conditions of Sale

To all our offers, quotations, sales, deliveries and supplies and/or agreements, and to all related services and activities the

Trespa International B.V. General Conditions of Sale apply, filed at the Venlo Chamber of Commerce on 11 April 2007, registered under number 24270677, and appearing on the website at www.trespa.com. The text of these General Terms and Conditions will be sent to you upon request.

Responsibility

We believe all information in this publication to be correct at the time of printing. It is intended as information concerning our products and their application possibilities and is therefore, not intended as any form of guarantee with regard to any specific product characteristic.

Colours

The colours in this document are printed, and therefore, may vary slightly from the original Trespa panel colours with respect to gloss, colour shades and surface texture. Original samples are available on request.

Registered trademarks

® Trespa, Meteon, Athlon, TopLab, TopLab™, Virtuon, Volkern, Ioniq

and Inspirations are registered trademarks of Trespa International B.V.

Copyrights

© All rights reserved. No part of this publication may be reproduced, stored in a retrieval system, or made public, in any form or by any means, either graphic, electronic or mechanical, including photocopying, recording or otherwise, without the prior written permission of Trespa International B.V.

Projects on cover:

HOK Architects, United States.
Studio Arch. Mair & Dorfmann, Italy.
Arch. Renato Fornaciari, Italy.



Burger Grootstra architectenadviseurs, The Netherlands

Trespa UK Ltd

Grosvenor House
Hollinswood Road
Central Park, Telford
Shropshire, TF2 9TW
Tel.: 44 (0) 1952 290707
Fax: 44 (0) 1952 290101
info@trespa.co.uk

Trespa International B.V.

P.O. Box 110, 6000 AC Weert
Wetering 20, 6002 SM Weert
The Netherlands
www.trespa.com

EMEA Export

Tel.: 31 (0) 495 458 359 / 285
Fax: 31 (0) 495 458 383
infoexport@trespa.com

Trespa North America Ltd.

12267 Crosthwaite Circle
Poway, CA 92064
Tel.: 1-800-4-TRESPA
Fax: 1-858-679-0440
info@trespanorthamerica.com

Trespa New York Design Centre

62 Greene Street (Ground Floor)
New York, NY 10012
Tel.: 1-212-334-6888
Fax.: 1-866-298-3499
info.ny@trespa.com

Asia/Pacific Sales Support

Tel.: 31 (0) 495 458 812
Fax: 31 (0) 495 458 383
infoapac@trespa.com

Trespa China Co. Ltd.

Room 2604-05, HuaiHai Plaza
No. 1045 HuaiHai Road (central)
ShangHai 200031, P.R. China
Tel.: 86 (0) 21 6288 1299
Fax: 86 (0) 21 6288 1296
infochina@trespa.com

CSD Asia/Pacific

Tel.: 86 (0) 21 5465 8388
Fax: 86 (0) 21 5465 6989

Trespa Singapore Pte Ltd.

UOB Plaza 1
80 Raffles Place
Level 35 Room 8
Singapore 048624
Tel.: 65 6248 4613
Fax: 65 6248 4501
infoapac@trespa.com



Arch. Cabine/Vigier, France

Your Trespa distributor:



code U2460
version 07-2008 copies 5, 500

www.trespa.com

TRES|PA®

UNIQUE AND SPECIAL: TRESPA METEON

Trespa Meteon architectural panels are available in a wide choice of standard colours, effects and finishes – or they can be custom-made. These panels have the ability to transform, enhance or even add new dimensions to your design. Literally thousands of applications around the world bear testimony to the material's versatility. Trespa Meteon is not just beautiful – it is exceedingly robust and durable so today's vision will remain tomorrow's reality.

Proprietary technology

Trespa Meteon is a flat panel, based on thermosetting resins, homogeneously reinforced with wood fibres and manufactured under high pressure and at high temperatures, using proprietary EBC technology. The panels have an integrated decorative surface.

Trespa Meteon is used for façade cladding, fascias, soffits, balcony panels and balustrades, urban furniture, sandwich panels and a wide range of other exterior applications. With a strong reputation for design and innovation, Trespa has recently developed and introduced curved elements to help create extra depth to façades. Trespa's proprietary technology ensures that Meteon panels are unique in the market today.

Healthier buildings

Trespa Meteon is highly suited for ventilated facade systems. These "breathing" or envelope systems offer possibilities for high insulation values, perfect building physics and contribute to a healthy indoor climate. In hot conditions, excessive solar heat can be vented away through the ventilation between the panels and the insulation materials. This provides a living environment for sustainable building applications.

Design possibilities

Trespa gives architects an inspiring view of the future. Its Perspectives platform provides a source of ideas, new techniques, colours and shapes. Themes like Character, Rhythm and Depth give new impulses to façade design.

Trespa Meteon panels can be adapted, changed, moulded and fixed in different ways. This allows for the creation of aesthetically different façades without altering the fundamental characteristics and performance of the product. Changing the surface of the panels adds interest, depth and movement and this is accentuated by the ever changing play of sunlight and shadow. Trespa curved elements can be used to create extra depth in façades. The use of light adds a further dimension: straight lines become curves and colours undergo a true metamorphosis, by illuminating the façade's panels or joints by means of the latest LED technology.

Thanks to their versatility, Trespa panels offer architects near limitless design possibilities.



Arch. Cabinet Salvador, France

Arch. Cabinet Salvador, France





Kolon Architecten, The Netherlands

Weather resistant

Trespa Meteon is extremely weather resistant. Neither sun, rain – including acid rain – nor moisture have any effect on the panel’s surface or core. Both the UV resistance and colour stability have the highest score with a 4-5 classification on the International Grey Scale (ISO 105 A 02). Large or rapid temperature fluctuations from -20°C to +80°C do not affect the properties, stability or appearance of the panel. Colours will not change significantly for at least ten years, even under the most severe climatic conditions, or in heavily polluted industrial areas. Whatever your weather conditions, Trespa panels are able stand up to their environment.

Easy to keep clean

The smooth panel surface has a closed non-porous structure, ensuring that practically no dirt accumulates. Neither the surface nor the sawn edges need to be painted or provided with a protective cover. Trespa Meteon is completely unaffected by household cleaning agents or

strong organic solvents. Thanks to these characteristics, Trespa Meteon is easy to clean and will help to create low-maintenance exterior applications.

Tough

The modulus of elasticity and high tensile and flexural strength guarantee Trespa Meteon’s high impact resistance. The homogeneity and density of the core ensure that the panel has a high pull-out strength for fixings or fasteners. This is especially important when the panel is invisibly fixed with screws or inserts.

The dimensional stability and workability of Trespa Meteon are comparable to those of hardwood, however, Trespa Meteon panels are not affected by moisture and are not susceptible to weathering, mould or rot.

This combination of strengths will ensure that Trespa panels retain their good looks for many years to come.

Environmental considerations

Environmental considerations play a significant role in the development and manufacture of Trespa Meteon. Panels consist of approximately 70% softwood fibre and 30% thermosetting resin. The wood fibre comes from fast-growing pine wood from European production forests. Overall some 85% of the used raw materials are rapidly renewable. In addition up to 10% of residual materials from production are recycled to produce new Trespa construction panels.

Trespa International was one of the first producers of panel material to be certified according to ISO 14001, awarded by Lloyd’s Register. The ISO 14001 standard describes the steps required for setting up, implementing, maintaining and improving a completely integrated environmental management system.

Safe fire behaviour

In a fire, Trespa Meteon does not melt, drip or explode and retains its stability for a long time. Key European testing bodies have awarded Trespa Meteon FR grade the most favourable classifications for organic material fire behaviour.

Building certificates

All major European certification institutes which form the “European Union of Agrément (UEATC)” have certified both Trespa Meteon and its recommended fixing systems. Certificates are issued by amongst others: KOMO; DIBt; BUTgb; BBA; CSTB and TORROJA. This makes Trespa a reliable partner and Meteon panels an excellent choice for long-lasting buildings.

CE Marking

Trespa International has introduced the new CE marking for its products. Trespa Meteon fully complies with the requirements of the new EU standard.

Warranties

Thanks to practical experience over many years and the high quality of Trespa Meteon panels, warranties are available both for the product range in general and for specific projects. More information can be obtained from your local Trespa office or representative.

DELIVERY PROGRAMME TRESPA METEON

	Uni colours				Metallics				Naturals	Wood Decors
	Satin	Rock	Gloss	Originals	Satin	Rock	Gloss	Originals	Satin	Satin
Panel size (mm)										
3650 x 1860	■	■	■	■ ⁴	■	■	■	■ ⁴	■	■
2550 x 1860	■	■			■	■			■	■
3050 x 1530	■	■ ⁴			■ ⁴	■ ⁴			■ ⁴	■ ⁴
4270 x 2130 ⁸	■				■ ⁷				■ ⁷	■ ⁷
Panel thicknesses (mm)										
6	■									■ ⁵
8	■	■			■	■			■	■
10	■	■	■		■	■	■		■	■
13	■	■	■		■	■	■		■	■
10 - 16				■				■		
Type/Qualities										
Coloured on one side	■	■	■	■	■	■	■	■	■	■
Coloured on both sides	■				■ ⁷				■ ⁷	■ ⁷
Varitop ³	■	■			■	■				
Standard grade (Non-FR)/black core	■	■	■		■	■	■		■	■
Fire Retardant (FR)/black core	■	■	■	■	■	■	■	■	■	■
Corner profile ² (mm)										
3650 x 300 x 300, radius 20	■	■ ¹			■	■ ¹				
Corner profile thicknesses (mm)										
8	■	■			■	■				
10	■	■			■	■				
Curved elements ⁵										
Radii > 650 mm/thickness 10 mm	■	■			■	■				
Minimum order quantity										
1 panel	■	■	■		■	■	■		■	■
5 panels				■				■		

¹ Texture on one side (outside face)

² Coloured on both sides

³ Varitop: coloured on both sides, one side always standard white (A 03.0.0 Satin)

⁴ On request

⁵ For detailed delivery information please consult your local Trespa office

⁶ Only available in standard grade (Non-FR)/black core

⁷ 4270 x 2130 mm only available single sided

⁸ Only available in Europe

Please note:

- > Wood Decors: the wood grain is in the length of the panel.
- > The Wood Decors and Naturals are not available in all worldwide areas at this time. For further information, please consult your local Trespa office.
- > Metallics: Trespa Meteon Metallics panels feature a directional coloured surface. See technical documentation or installation guidelines for further information. The full quantity of Trespa Meteon Metallics sheets required for a project should be ordered and supplied as a single instruction.
- > Gloss texture: Trespa Meteon panels with a gloss texture are delivered with a protective film, which must be removed immediately after installation. For more information on installation see special installation guidelines.
- > Fire Retardant grade: Trespa Meteon single-sided decorative Fire Retardant grade will be faced with an identification print on the reverse of the panel in addition to the panel sticker. Trespa Meteon double-sided decorative standard grade (Non-FR) and Fire Retardant grade can be clearly identified and distinguished on the basis of the panel sticker.
- > LED solutions - to realise a façade design with artificial light please consult your local Trespa office.

Disclaimer:

All Trespa samples and all Trespa panels are produced within the specified tolerances. Samples and production panels do not originate from the same production batch. The colour perception is by nature influenced by slight variations in pigments used as well as by the angle of observation.



Arch. Roel Baeyens, Belgium

Metallics

■ = Texture available.
 ▢ = Varitop
 (coloured on both sides,
 one side always standard
 white A 03.0.0 Satin).

		Satin	Rock	Gloss	Originals
M 21.3.4 Azurite Blue		■	■	■	■
M 18.7.2 Amethyst		■	■		■
M 21.8.1 Graphite Grey		▢	▢	■	■
M 35.7.1 Malachite Green		▢	▢		
M 51.0.2 Urban Grey		▢	▢		
M 51.0.1 Aluminium Grey		▢	▢	■	■
M 12.4.2 Garnet Red		▢	▢	■	■
M 53.0.1 Copper Red		▢	▢	■	■
M 53.0.2 Copper Yellow		▢	▢	■	■
M 40.4.3 Mustard Yellow		▢	▢		■
M 06.4.1 Amber		▢	▢		■
CM 26.4.2 Mystic Green		▢	▢		■
CM 22.4.1 Mystic Silver		▢	▢		■

The colours in this document are printed, and therefore, may vary slightly from the original Trespa panel colours with respect to gloss, colour shades and surface texture. Original samples are available on request.

Wood Decors

■ = Texture available.
 ▢ = Varitop
 (coloured on both sides,
 one side always standard
 white A 03.0.0 Satin).

		Satin	Rock	Gloss	Originals
NW01 Loft Grey		■			
NW02 Elegant Oak		■			
NW03 Harmony Oak		■			
NW04 Pacific Board		■			
NW05 Loft Brown		■			
NW06 Montreux Amber		■			
NW07 Montreux Sunglow		■			
NW08 Italian Walnut		■			
NW09 Wenge		■			
NW10 English Cherry		■			
NW11 Santos Palisander		■			
NW12 Natural Bagenda		■			
NW13 Country Wood		■			
NW14 French Walnut		■			
NW15 Milano Sabbia		■			
NW16 Milano Terra		■			
NW17 Milano Grigio		■			

Naturals

■ = Texture available.
 ▢ = Varitop
 (coloured on both sides,
 one side always standard
 white A 03.0.0 Satin).

		Satin	Rock	Gloss	Originals
NA05 Erosion		■			
NA06 Patina		■			
NA07 Deep Blue		■			
NA08 Sierra Red		■			
NA09 Oxidation		■			
NA10 Titanic		■			

Uni colours

A 20.5.2 Lavender Blue		■			
A 22.6.2 Dark Denim		▢			
A 20.7.2 Dark Blue		■	■	■	
A 90.0.0 Black		▢	▢	■	
A 25.8.1 Anthracite Grey		▢	▢	■	
A 25.7.1 Iron Grey		■	■	■	
A 21.5.1 Mid Grey		▢	▢	■	
A 10.6.1 Taupe		■			
A 10.3.2 Old Rose		■			
A 08.2.3 Salmon		▢			
A 10.3.4 Terra Cotta		▢			
A 11.4.4 English Red		■	■		
A 10.4.5 Sienna Brown		▢			

■ = Texture available.
 ▢ = Varitop
 (coloured on both sides,
 one side always standard
 white A 03.0.0 Satin).

		Satin	Rock	Gloss	Originals
A 09.6.4 Mahogany Red		▢			
A 08.4.5 Rusty Red		▢			
A 12.6.3 Wine Red		▢	▢	■	
A 14.7.2 Deep Red Brown		▢			
A 08.8.1 Dark Brown		▢			
A 34.8.1 Forest Green		▢			
A 32.7.2 Dark Green		▢	▢	■	
A 33.3.6 Brilliant Green		▢			
A 36.3.5 Turf Green		▢			
A 40.5.1 Moss Green		▢			
A 37.2.3 Spring Green		▢			
A 36.4.1 Agave Green		▢	▢	■	
A 28.6.2 Mid Green		▢			
A 26.5.4 Pacific		▢			
A 22.6.3 Midnight Blue		▢			
A 21.5.4 Cobalt Blue		▢			
A 22.4.4 Brilliant Blue		▢			
A 24.4.1 Steel Blue		▢	▢	■	
A 28.2.1 Aquamarine		▢			
A 30.3.2 Verdigris		▢			
A 32.2.1 Translucent Green		▢			

■ = Texture available.
 ▢ = Varitop
 (coloured on both sides,
 one side always standard
 white A 03.0.0 Satin).

		Satin	Rock	Gloss	Originals
A 03.4.0 Silver Grey		▢	▢	■	
A 03.1.0 Pastel Grey		▢			
A 21.1.0 Winter Grey		▢			
A 22.2.1 Bluish Grey		▢			
A 22.3.1 Ocean Grey		▢			
A 16.5.1 Mauve		▢			
A 13.3.1 Heather		▢			
A 08.3.1 Stone Grey		▢	▢	■	
A 08.2.1 Mid Beige		▢	▢	■	
A 05.1.1 Stone Beige		▢	▢	■	
A 05.0.0 Pure White		▢	▢	■	■
A 03.0.0 White		▢	▢	■	■
A 05.1.0 Papyrus White		▢			
A 04.0.0 Cream White		▢			
A 04.0.1 Pearl Yellow		▢			
A 04.0.2 Pale Yellow		▢			
A 07.1.1 Sand		▢	▢	■	
A 05.1.2 Champagne		▢	▢	■	
A 05.1.4 Sun Yellow		▢			
A 04.1.7 Gold Yellow		▢	▢	■	
A 06.3.5 Ochre		▢	▢	■	

■ = Texture available.
 ▢ = Varitop
 (coloured on both sides,
 one side always standard
 white A 03.0.0 Satin).

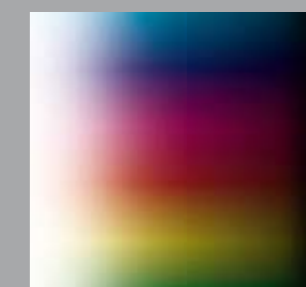
		Satin	Rock	Gloss	Originals
A 10.1.8 Red Orange		▢			
A 12.3.7 Carmine Red		▢			
A 17.3.5 Cyclam		▢			
A 18.3.5 Plum Blue		▢			
A 20.2.3 Light Viola		▢			
A 23.0.4 Mineral Blue		▢			
A 30.2.3 Brilliant Turquoise		▢			

TEXTURES

The Meteor range of colours can be complemented by a choice of finishes that provide a highly tactile and aesthetic finish for your façade.

Satin	
Rock	
Gloss	
Originals	

PROJECT COLOURS



Trespa Meteor architectural panels are available in a wide choice of standard colours and effects. To create façades that are even more individual and expressive, Trespa Meteor Panels can be custom-made in special project colours.