

Colours & Surfaces

10 Standard colours - 3 surfaces

fibrec offers a wide range of design options for facades. The selection of ten different colours in each of three surfaces offers a wide range of designs to meet individual expectations. Special colours (RAL - equivalent) can also be produced on request. The three surface finishes (sand blasted, finely sandblasted or brushed) open up a wide spectrum of optical and tactile effects. The combination of different surfaces in the same colour creates a particularly vivid design.

Natural colours

fibrec has a distinct advantage over other colour-treated materials - namely the consistent colouring of the whole panel. The mixture of the desired colour is created before the actual production process. The colour becomes part of the product by being added in the blending of the raw materials. Other products are in some cases only superficially treated and coloured, resulting in significant quality differences.

fibrec is coloured by ferric oxide colours and natural additions and subsequently brushed or sandblasted. The natural, authentic colours of fibrec fit well in landscapes and blend with nature and the environment.

Colour fastness and UV stability

Liquid colours for colouring cement-bonded building materials comply with the DIN EN 12878. The pigments used in the liquid colours are light-, UV- and weather-resistant and not soluble in water, alkalis or diluted acids. Factors such as natural fluctuations in raw materials used, panel and air moisture, dirt and light sources must be taken into consideration. The appearance of the panels may even become brighter due to dehydration. Changes caused by age, weather or environment specific influences are natural processes that cannot be influenced from a production point of view and are therefore not considered material defects. The technical characteristics of the panel are not affected by these.

Colour differences in production batches

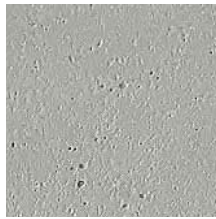
Glassfibre reinforced concrete is a natural material. The characteristics of the raw materials such as the colour of the cement can lead to variations in colour in different production batches. To avoid any discrepancies, we recommend ordering the total amount instead of part orders, and ordering spare panels with the first delivery.

Due to technical reasons printed colours may differ from the original shade.

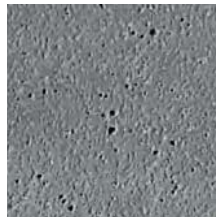
Polar White



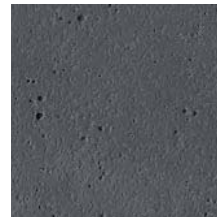
Ivory



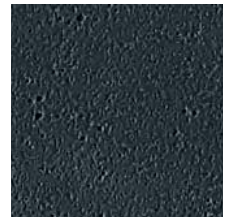
Silvergrey



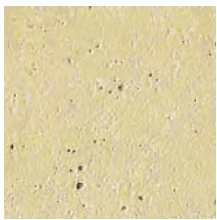
Anthracite



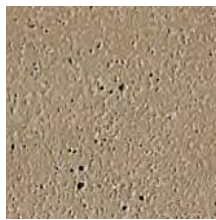
Liquide Black



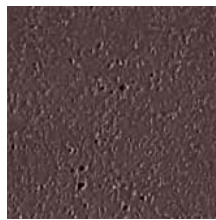
Sahara



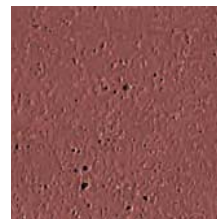
Sandstone



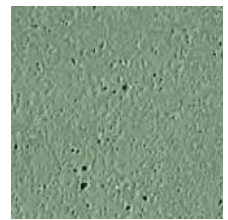
Terra



Terracotta



Venice Green



FE | Ferro

Sandblasted: blasted at higher pressure, surface is rougher



FL | Ferro Light

Sandblasted: blasted at lower pressure, surface is finer than FE



MA | Matt

Brushed: smooth surface, natural blushing effect



Special Colours on request; orders from 1.000 m²

Colour Specifier



Small air bubbles and porosity are possible: data sheet on exposed concrete 02/2004 (Publ.:BDZ/DBV)